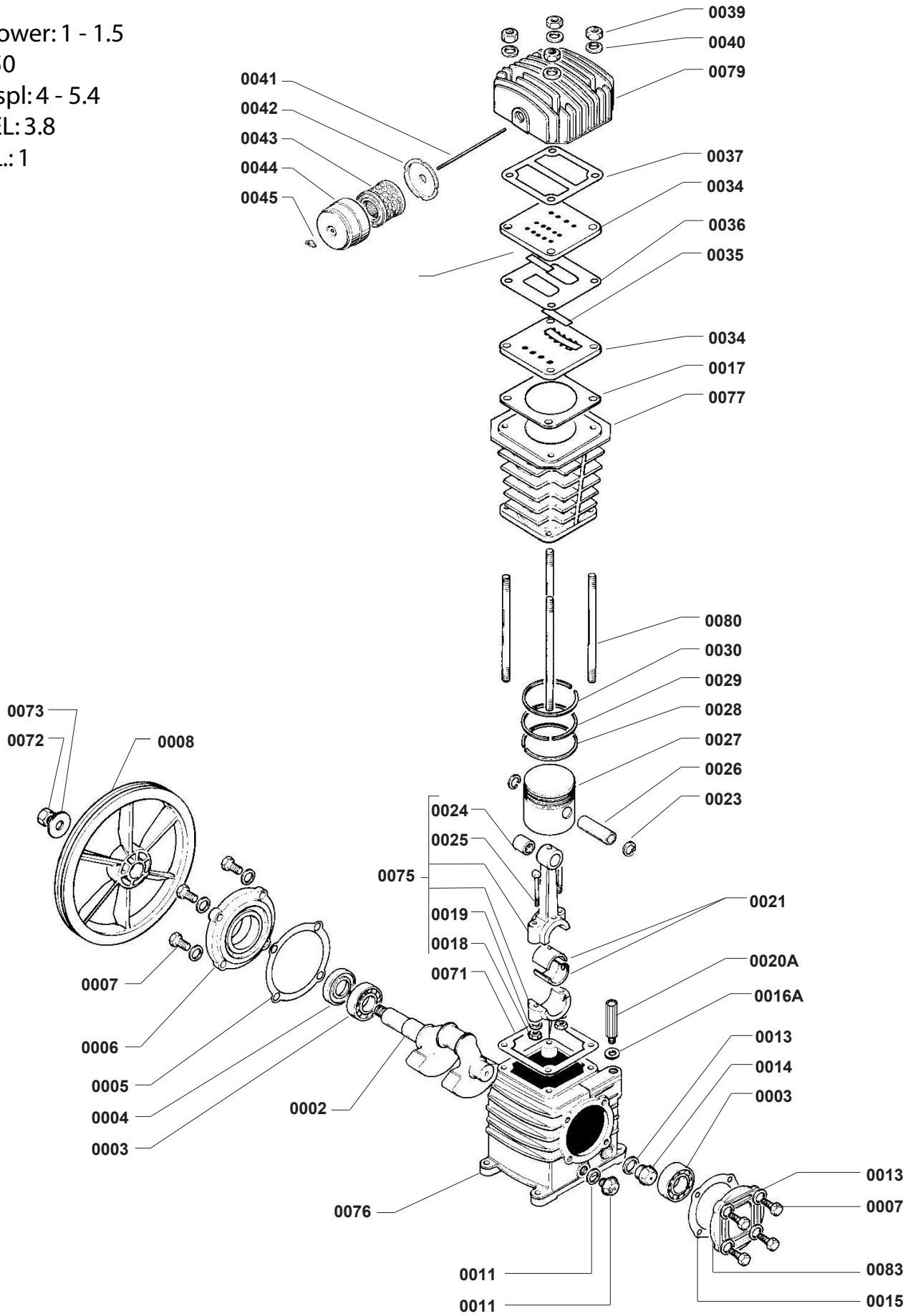


# K8

Horsepower: 1 - 1.5  
RPM: 850  
CFM Displ: 4 - 5.4  
CFM DEL: 3.8  
NO. CYL.: 1  
Stage: 1



# K8 PUMP

<i>Part Number</i>	<i>description</i>	<i>Part Number</i>	<i>Description</i>
0002	Crankshaft (K8)	0040	Washer (Head)
0003	Ball Bearing	0041	Tension Rod
0004	Seal	0042	Filter Cover (Base)
0005	Gasket	0043	Filter Element (1 Stage)
0006	Support	0045	Wing Nut
0007	Screw 8x22	0071	Gasket (K8 Crankcase)
0008	Flywheel	0072	Nut (Flywheel)
0011	Oil Drain Plug	0073	Washer (Flywheel)
0013	Gasket (Oil Level)	0075	Connecting Rod W/Upper Bushing
0014	Oil Level Sight Gauge	0076	Crankcase (K8)
0015	Gasket	0077	K8 Cylinder
0016A	Gasket (New Style Oil Breather)	*0078	Aluminum Valve Plate
0017	Gasket (Cylinder Valve Plate)	0079	Head, Cylinder
0018	Nut (Connecting Rod)	0080	Tension Rod (Head, K8)
0019	Washer (Connecting Rod)	0083	Support
020A	Oil Breather (New Style)	* Optional	
0021	Bearing Shell (Pair)		
0023	Circle Clip D15		
0024	Bushing D15		
0025	Connecting Rod Screw		
0026	Piston Pin		
0027	Piston AL D64		
0028	Slotted Oil Scrapper Ring D64		
0029	Stepped Scrapper Ring D64		
0030	Compression Ring D64		
0034	Valve Plate		
0035	Valve Strip		
0036	Gasket (Valve Plate)		
0037	Gasket (Head)		
0039	Nut (Head)		

REV: A

DATE: 2/21/96

K8 PARTS VIEW/LISTING