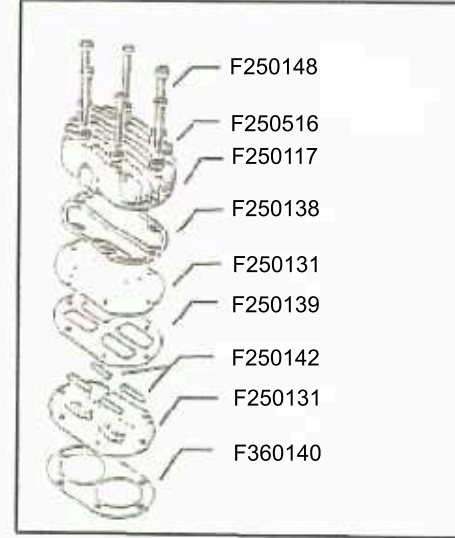
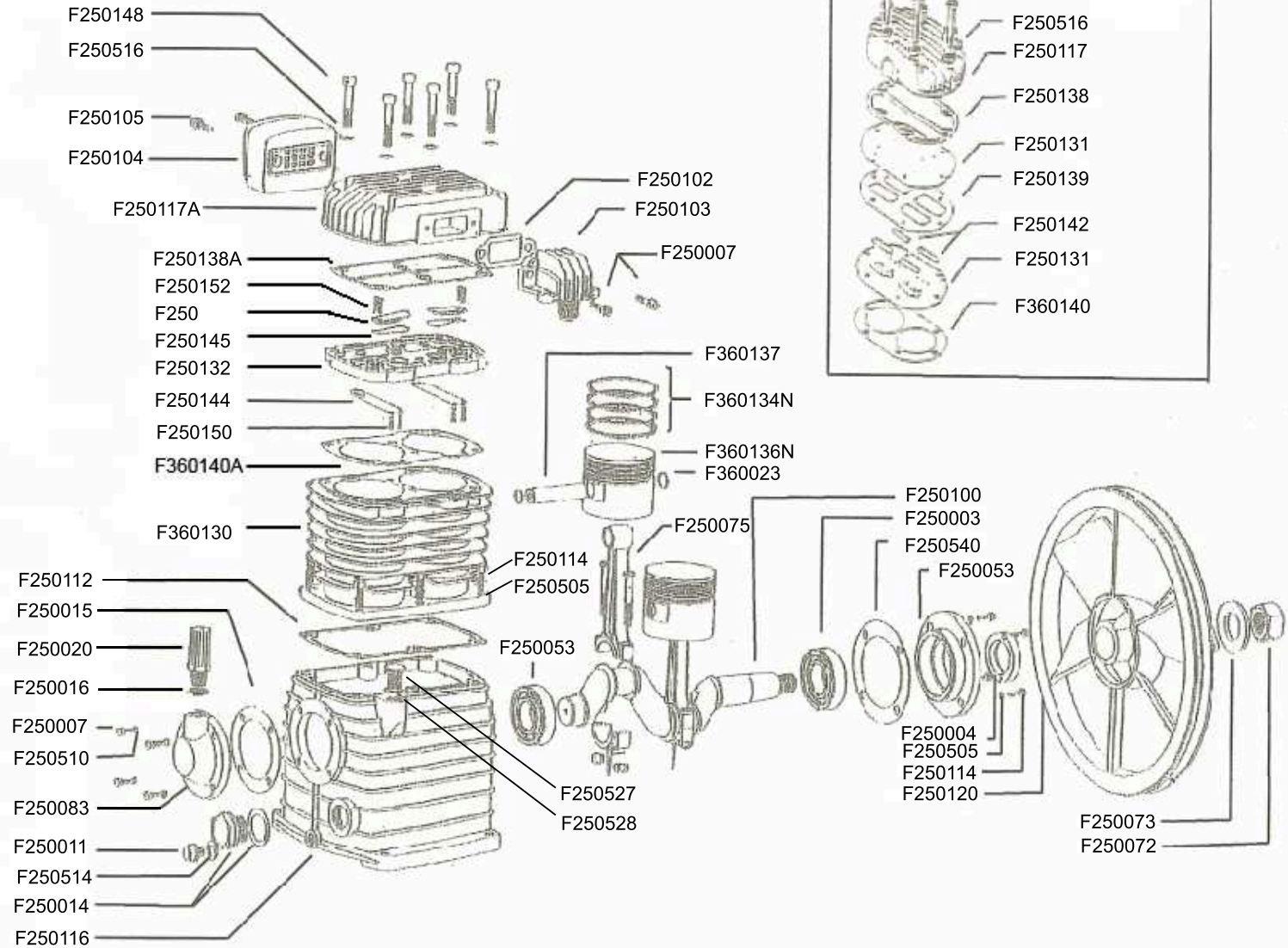


# F 36A

# F 36 ORIGINAL VALVE ASSEMBLY



Rev: D  
 Date: 1/31/2006

# F 36A PUMP

<i>Part Number</i>	<i>Description</i>	<i>Part Number</i>	<i>Description</i>
F250003	Ball Bearing	F250120	Pulley
F250004	Oil Seal	F250131	Valve Plate; Original
F250007	Bolt	F250132	Valve Plate; Revised
F250011	Oil Drain Plug	F250142	Valve Strip; Original
F250014	Oil Sight Glass And Gasket	F250144	Valve Strip, Revised
F250015	Gasket; Bearing Cover	F250145	Valve Strip, Revised
F250016	Gasket; Crankcase Breather	F250148	Bolt
F250020	Crankcase Vent Breather	F250150	Valve Strip, Revised
F250053	Bearing Carrier	F250152	Screw; Valve Strip and Retainer
F250072	Nut	F250505	Washer
F250073	Washer	F250510	Lock Washer
F250075	Connecting Rod Assembly	F250514	Washer; Aluminum
F250083	Bearing Cover	F250516	Washer
F250100	Crankshaft	F250527	Oil Filler
F250102	Gasket; Discharge Manifold	F250528	O Ring
F250103	Discharge Manifold	F250540	Gasket; Bearing Carrier
F250104	Filter Assembly w/ Element	F360023	Clip Ring
F250105	Bolt; Filter Assembly	F360130	Cylinder
F250112	Gasket; Cylinder/Crankcase	F360134N	Ring Set; 1 Piston
F250114	Bolt	F360136N	Piston
F250116	Crankcase	F360137	Piston Pin
F250117	Cylinder Head, Original	F360140	Gasket; Cylinder/Valve, Original
F250117A	Cylinder Head, Revised	F360140A	Gasket; Cylinder/Valve, Revised
NOT SHOWN ON DRAWING			
F250018	Connecting Rod Nut (Shown As Part Of Connecting Rod Assembly Only)		
F250025	Connecting Rod Bolt (Shown As Part Of Connecting Rod Assembly Only)		
F250537	Split Pin (Shown As Part Of Connecting Rod Assembly Only)		
CW HOK F25	Head Overhaul Kit		

REV: C

DATE: 3/10/98

K36 PARTS VIEW/LISTING