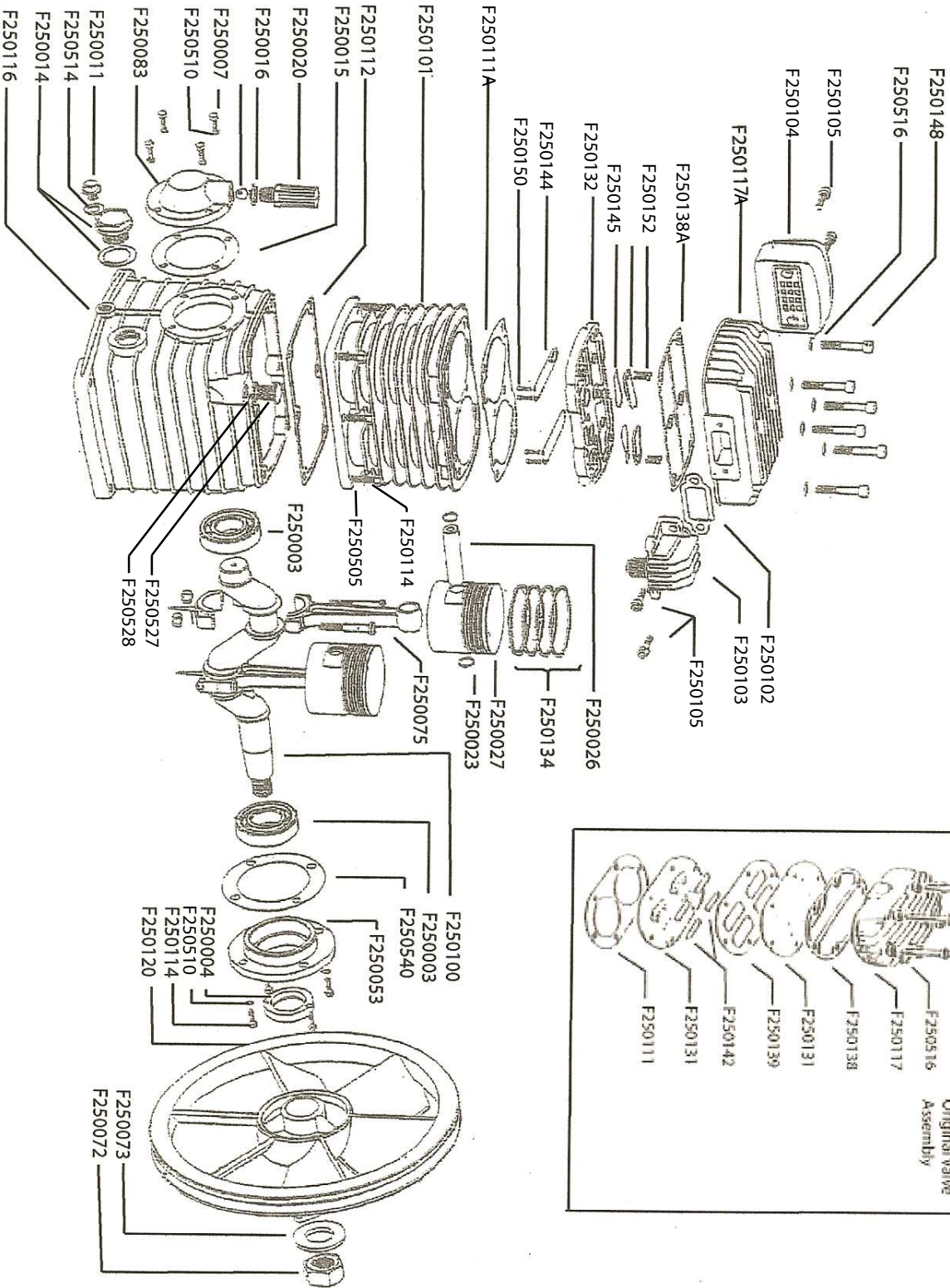


F 25A



Rev: D
Date: 1/31/2006

F 25A PUMP

<i>Part Number</i>	<i>description</i>	<i>Part Number</i>	<i>Description</i>
F250003	Ball Bearing	F250114	Bolt
F250004	Oil Seal	F250116	Crankcase
F250007	Bolt	F250117	Cylinder Head, Original
F250011	Oil Drain Plug	F250117A	Cylinder Head, Revised
F250014	Oil Sight Glass And Gasket	F250120	Pulley
F250015	Gasket; Bearing Cover	F250131	Valve Plate; Original
F250016	Gasket; Crankcase Breather	F250132	Valve Plate; Revised
F250020	Crankcase Vent Breather	F250134	Ring Set; 1 Piston
F250023	Clip Ring	F250138	Gasket; Cylinder, Original
F250026	Piston Pin	F250138A	Gasket; Cylinder, Alumin., Revised
F250027	Piston	F250139	Gasket; Aluminum, Valve Plate
F250053	Bearing Carrier	F250142	Valve Strip; Original
F250072	Nut	F250144	Valve Strip, Revised
F250073	Washer	F250145	Valve Strip, Revised
F250075	Connecting Rod Assembly	F250148	Bolt
F250083	Bearing Cover	F250150	Screw; Valve Strip
F250100	Crankshaft	F250152	Screw; Valve Strip and Retainer
F250101	Cylinder	F250505	Washer
F250102	Gasket; Discharge Manifold	F250510	Lock Washer
F250103	Discharge Manifold	F250514	Washer; Aluminum
F250104	Filter Assembly w/ Element	F250516	Washer
F250105	Bolt; Filter Assembly	F250527	Oil Filler
F250111	Gasket; Cylinder/Valve, Original	F250528	O Ring
F250111A	Gasket; Cylinder/Valve, Revised	F250540	Gasket; Bearing Carrier
F250112	Gasket; Cylinder/Crankcase		

NOT SHOWN ON DRAWING

F250018	Connecting Rod Nut (Shown As Part Of Connecting Rod Assembly Only)
F250025	Connecting Rod Bolt (Shown As Part Of Connecting Rod Assembly Only)
F250537	Split Pin (Shown As Part Of Connecting Rod Assembly Only)
CW HOK F25	Head Overhaul Kit

REV: C

DATE: 3/10/98

K25 PARTS VIEW/LISTING